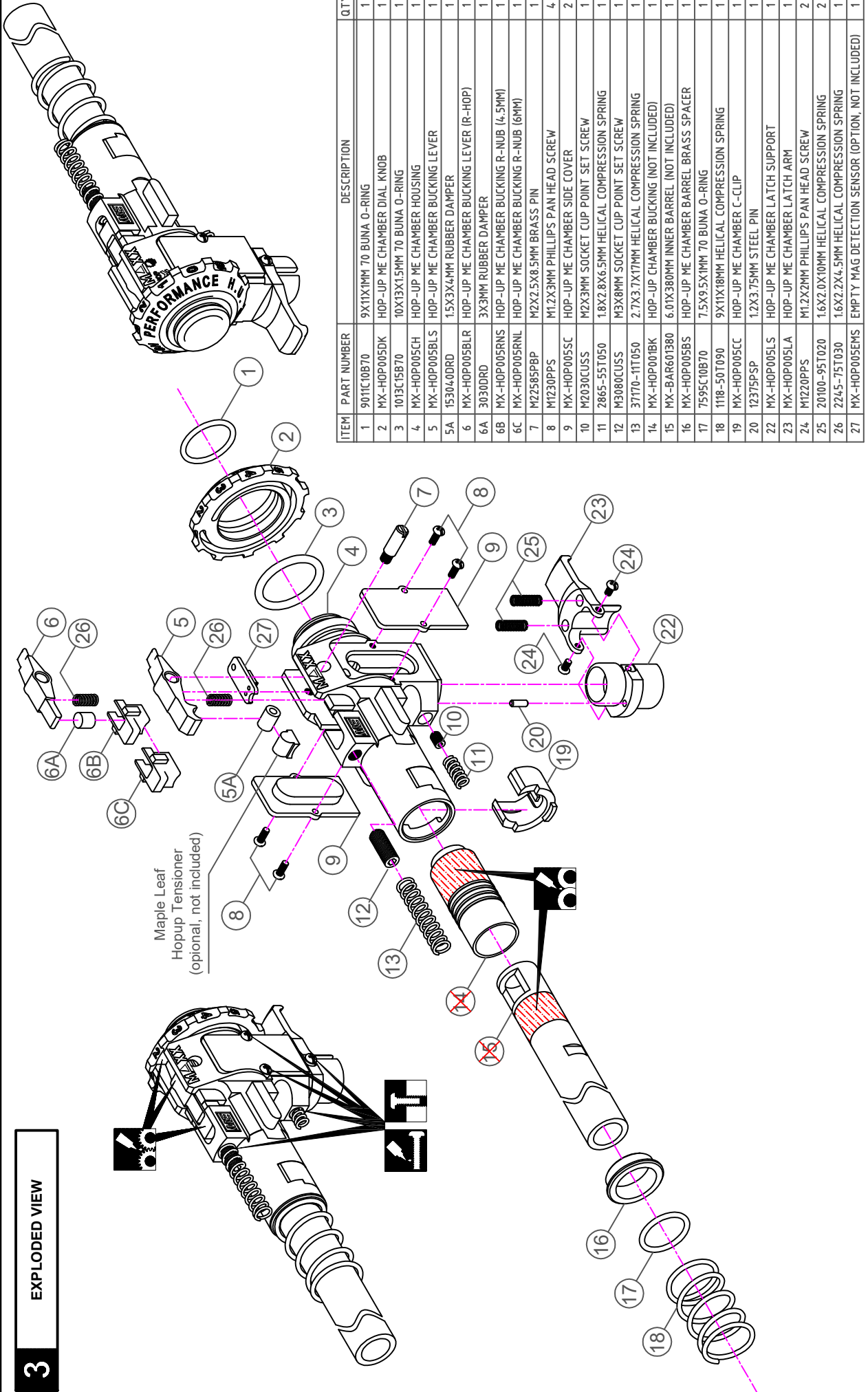


# CNC ALUMINUM HOPUP CHAMBER ME - PRO

COPYRIGHT © 2018

MAXX MODEL PRODUCTS, INC.

## 3 EXPLODED VIEW



ITEM	PART NUMBER	DESCRIPTION	QTY
1	9011C10B70	9X11X1MM 70 BUNA O-RING	1
2	MX-HOP005DK	HOP-UP ME CHAMBER DIAL KNOB	1
3	1013C15B70	10X13X15MM 70 BUNA O-RING	1
4	MX-HOP005CH	HOP-UP ME CHAMBER HOUSING	1
5	MX-HOP005BLS	HOP-UP ME CHAMBER BUCKING LEVER	1
5A	15304-0DRD	15X3X4MM RUBBER DAMPER	1
6	MX-HOP005BLR	HOP-UP ME CHAMBER BUCKING LEVER (R-HOP)	1
6A	3030DRD	3X3MM RUBBER DAMPER	1
6B	MX-HOP005RNS	HOP-UP ME CHAMBER BUCKING R-NUB (4.5MM)	1
6C	MX-HOP005RNL	HOP-UP ME CHAMBER BUCKING R-NUB (6MM)	1
7	M22585PBP	M2X2.5X8.5MM BRASS PIN	1
8	M1230PPS	M1.2X3MM PHILLIPS PAN HEAD SCREW	4
9	MX-HOP005SC	HOP-UP ME CHAMBER SIDE COVER	2
10	M2030CUS	M2X3MM SOCKET CUP POINT SET SCREW	1
11	2865-55T050	1.8X2.8X6.5MM HELICAL COMPRESSION SPRING	1
12	M3080CUS	M3X8MM SOCKET CUP POINT SET SCREW	1
13	37770-1T1050	2.7X3.7X17MM HELICAL COMPRESSION SPRING	1
14	MX-HOP001BK	HOP-UP CHAMBER BUCKING (NOT INCLUDED)	1
15	MX-BAR601380	6.01X380MM INNER BARREL (NOT INCLUDED)	1
16	MX-HOP005BS	HOP-UP ME CHAMBER BARREL BRASS SPACER	1
17	7595C10B70	7.5X9.5X1MM 70 BUNA O-RING	1
18	118-50T090	9X11X18MM HELICAL COMPRESSION SPRING	1
19	MX-HOP005CC	HOP-UP ME CHAMBER C-CLIP	1
20	12375PSP	1.2X3.75MM STEEL PIN	1
22	MX-HOP005LS	HOP-UP ME CHAMBER LATCH SUPPORT	1
23	MX-HOP005LA	HOP-UP ME CHAMBER LATCH ARM	1
24	M1220PPS	M1.2X2MM PHILLIPS PAN HEAD SCREW	2
25	20100-95T020	1.6X2.0X10MM HELICAL COMPRESSION SPRING	2
26	2245-75T030	1.6X2.2X4.5MM HELICAL COMPRESSION SPRING	1
27	MX-HOP005EMS	EMPTY MAG DETECTION SENSOR (OPTION, NOT INCLUDED)	1

Apply Silicone grease
 Apply Lithium grease
 Apply Threadlocker
 Tighten firmly, do not overtighten

**CAUTION: Please check your model carefully before operation!**

REV. MX-HOP005PRO-281018-01