

SNIPER RIFLE, 6mm, M40A3

Before using this bolt action airsoft rifle, read and follow the instructions.

Always treat a weapon as if it was loaded.

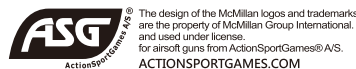
Never load the weapon in any situation except when you intend to fire it.

Keep your finger away from the trigger.

Wear goggles before shooting.

Always use the high quality BBs.

Always point the barrel in a safe direction.



VegaForce Company
www.gb-tech.com.tw



No.68, Jianguo 2nd Rd., Xinzhuang Dist,
New Taipei City 242, Taiwan
Phone: +886-2-2203-6630
Fax: +886-2-2203-6610
e-Mail: service@vegaforce.com.tw

Table of Contents

CHAPTER1.

| | |
|-----------------------|----|
| Component Names | 01 |
|-----------------------|----|

CHAPTER2. Operation Guide

| | |
|------------------------|----|
| Safety setting | 02 |
| Loading BBs | 02 |
| Shooting | 03 |
| HOP UP Setting | 03 |
| Stock Adjustment | 03 |

CHAPTER3.

| | |
|------------------------|----|
| Trouble Shooting | 04 |
|------------------------|----|

CHAPTER4.

| | |
|---------------------------------|----|
| Parts List | 06 |
| Optional Parts / Upgrades | 08 |
| After Service | 09 |

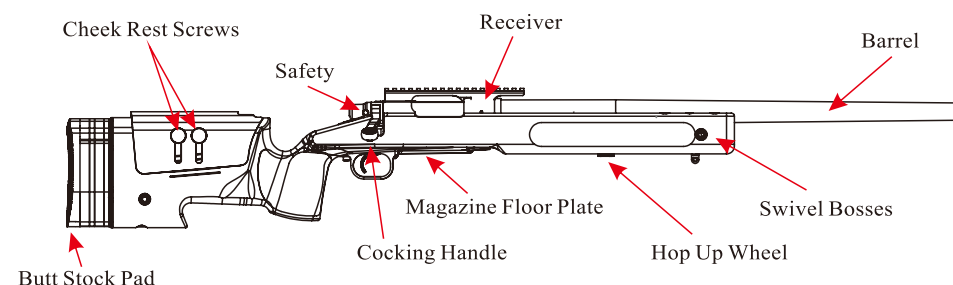
Specifications

SNIPER RIFLE, 6mm, M40A3

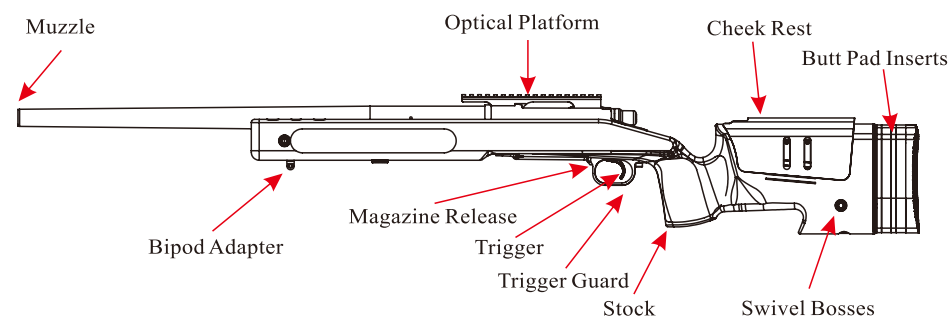
Over all: 1125 mm
Inner barrel: 470 mm
Weight: 3000 g
Bullet: 6 mm
Capacity: 20 rounds
Muzzle speed: 120 m/sec

Component Names

Right Side.



Left Side.



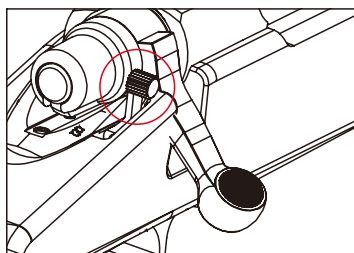
Operation Guide

Safety setting

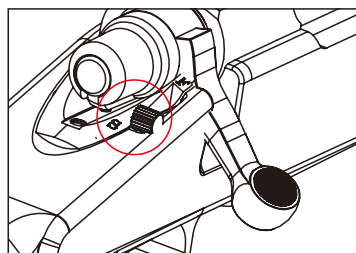
- Safety lever backward toward S position refers to “safety on”,
DO NOT pull the trigger while safety is on, otherwise the trigger unit will be damaged.
- Safety lever forward toward “F” position refers to “safety off”.
DO NOT have it on unless you intend to fire.

NOTE:

Keep safety on during transportation and storage



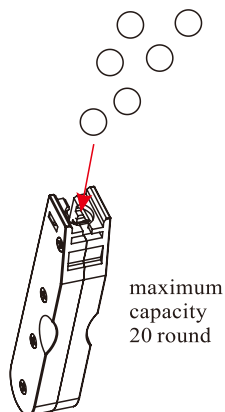
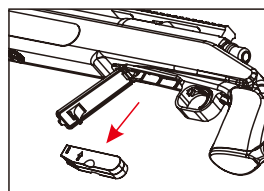
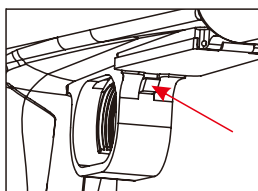
Safety off



Safety on

Loading BBs

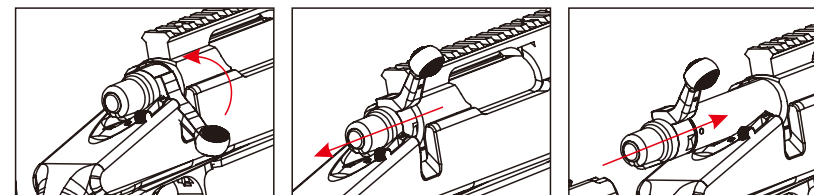
- Open the magazine floor plate.
- Take out the magazine.
- Loading BBs into the magazine
- Put back the magazine (follow the direction arrow).
- Close the magazine floor plate.



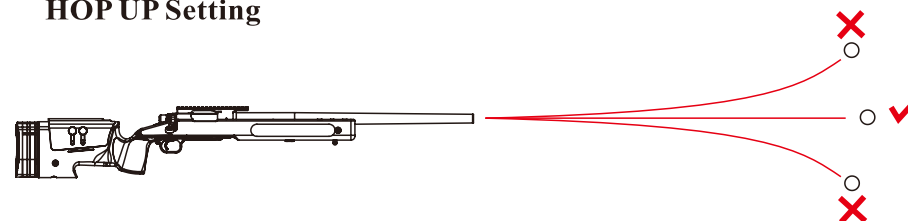
maximum
capacity
20 round

Shooting

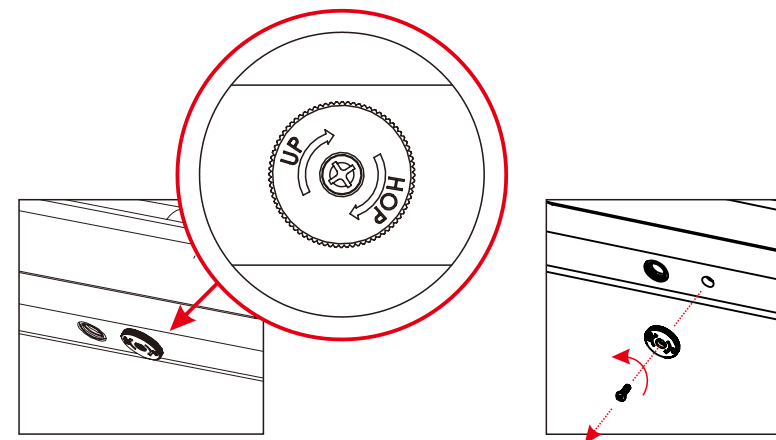
- Rotate the cocking handle counter-clockwise to the vertical position, and pull the bolt all the way back until a “click” sound heard.
- Push the bolt forward and rotate down the cocking handle.
- Push the safety lever forward towards the 'F' position to disengage the safety mechanism.
- Ready to pull the trigger to fire.



HOP UP Setting

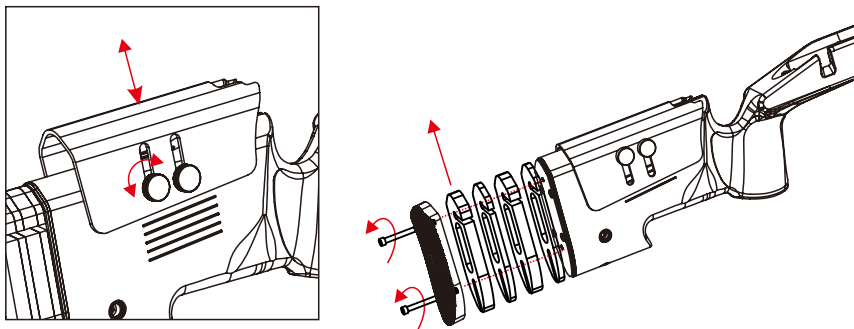


- Wheel it clockwise to INCREASE HOP UP.
- Wheel it counter clockwise to DECREASE HOP UP.



Stock Adjustment

- Cheek rest: loose the cheek rest screws, and lift the cheek rest up or down.
- Loose the screw in the butt stock pad, and remove or add the butt pad inserts for best fitting.



Trouble Shooting

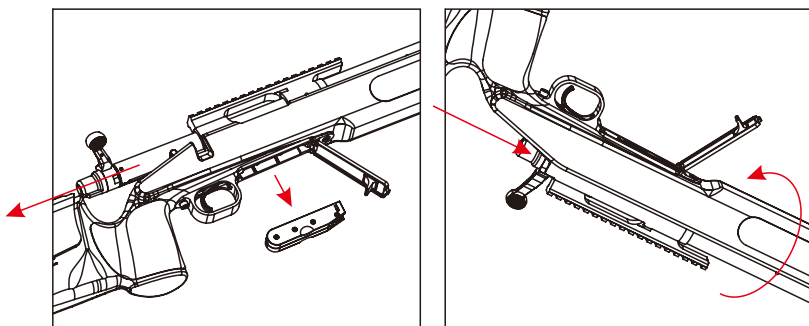
Cannot cock the bolt in appropriate position

Caution:

DO NOT force to push the bolt forward. The loading slider and loading plate will be damaged.

Step A

- Remove the magazine and pull the cocking handle backward.
- Upside down the rifle and push the cocking handle forward.



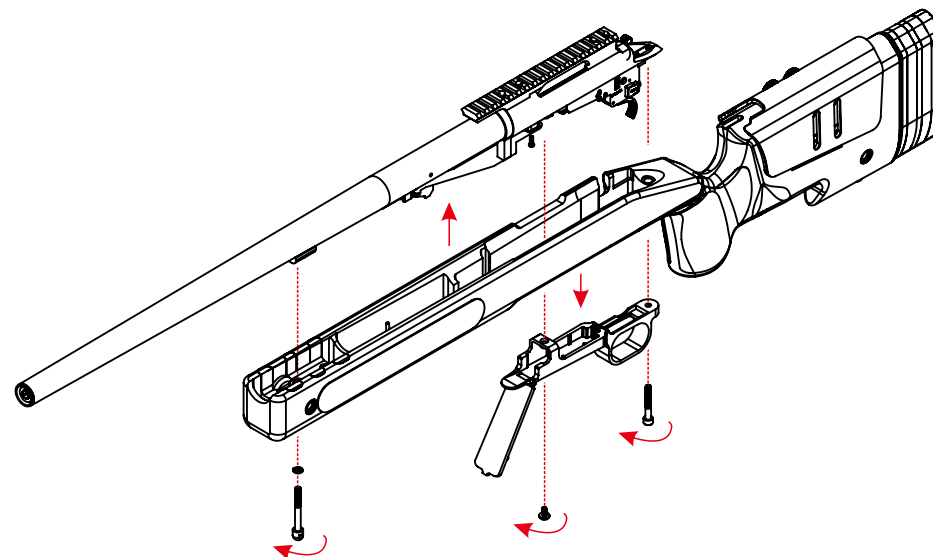
※ If the problem is still exist, please move on to Step B

Step B

Caution:

Before you take down the receiver assembly, please have the safety on and wheel counter clockwise to disable hop up completely.)

- Upside down the rifle.
- Remove the indicated screws and pull out the trigger guard.
- Unsecure the indicated screws on the loading slider and remove it.
- Pull the bolt backwards and remove all the BBs in the chamber and loading unit.

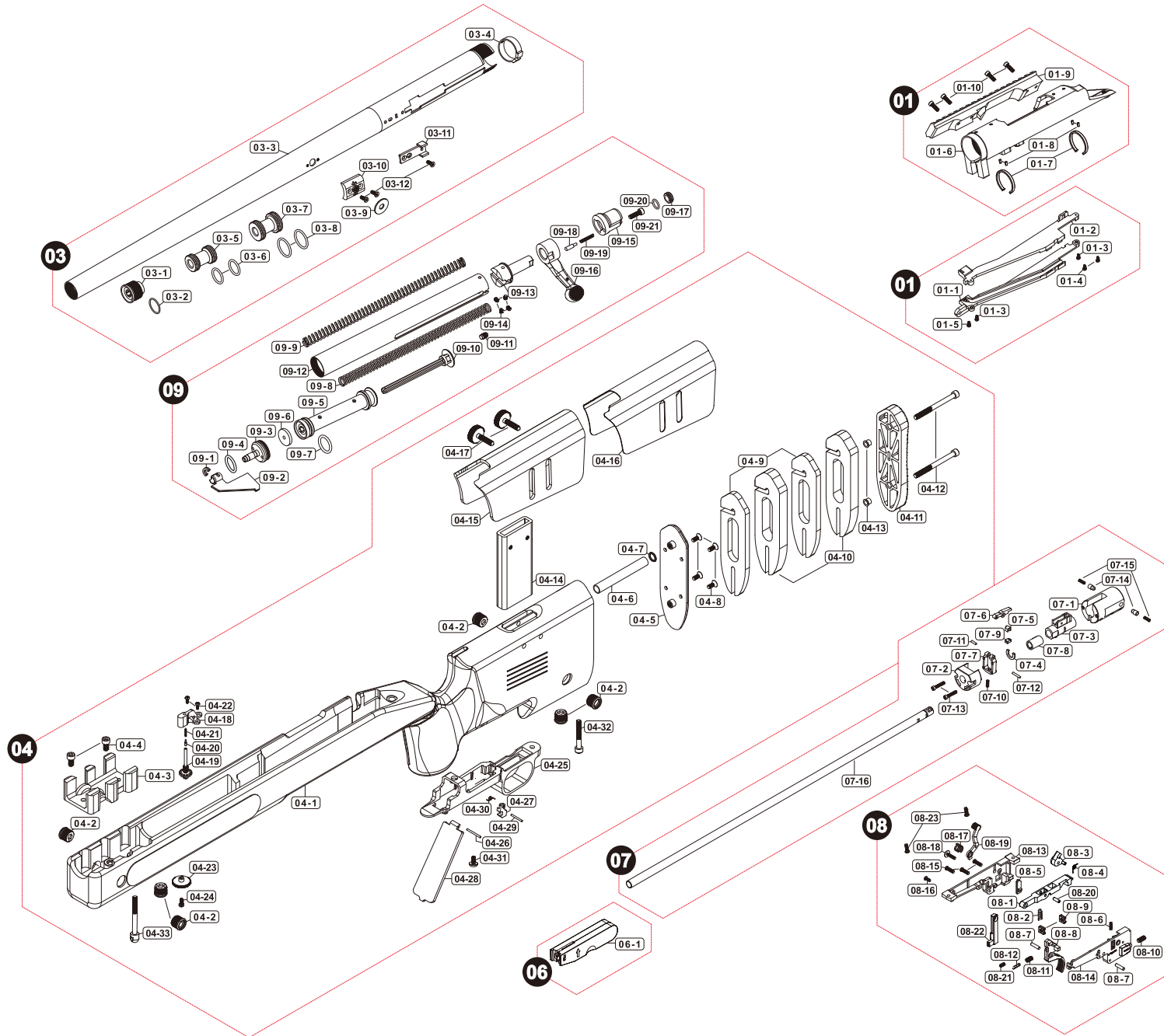


Caution:

DO NOT lose any parts while disassembling.

Parts List

SNIPER RIFLE, 6mm, M40A3



01 UPPER RECEIVER

| | |
|-------|------------|
| 01-1 | V0S0HOP0K0 |
| 01-2 | V0S0HOP0L0 |
| 01-3 | PSCW020641 |
| 01-4 | PSCW030821 |
| 01-5 | PSCW031021 |
| 01-6 | V0S2BLT010 |
| 01-7 | V0S2BLT020 |
| 01-8 | PBOT020401 |
| 01-9 | V0S1HGD010 |
| 01-10 | PSCW031004 |

03 BARREL/FOREARM

| | |
|-------|------------|
| 03-1 | V0S1BRL030 |
| 03-2 | PRIG000069 |
| 03-3 | V0S1BRL020 |
| 03-4 | V0S3HOP0A0 |
| 03-5 | V0S2BRL040 |
| 03-6 | PRIG000074 |
| 03-7 | V0S2BRL050 |
| 03-8 | PRIG000015 |
| 03-9 | PWAS000026 |
| 03-10 | V0S2BRL030 |
| 03-11 | V0S3HOP080 |
| 03-12 | PSCW031022 |

04 STOCK

| | |
|-------|------------|
| 04-1 | V0S1STK010 |
| 04-2 | V0S1STK080 |
| 04-3 | V0S1STK0A0 |
| 04-4 | PSCW051504 |
| 04-5 | V0S1STK020 |
| 04-6 | V0S1STK0B0 |
| 04-7 | PRIG000037 |
| 04-8 | PSCW041022 |
| 04-9 | V0S1STK030 |
| 04-10 | V0S1STK040 |
| 04-11 | V0S1STK070 |
| 04-12 | PSCW056004 |
| 04-13 | V0S1STK0D0 |
| 04-14 | V0S1STK090 |
| 04-15 | V0S1STK060 |
| 04-16 | V0S0STK0C0 |
| 04-17 | V0S1STK060 |
| 04-18 | V0S1HOP010 |
| 04-19 | V0S1HOP020 |
| 04-20 | V0S1HOP030 |
| 04-21 | V0S1SPG001 |
| 04-22 | PSCW030631 |
| 04-23 | V0S1HOP040 |
| 04-24 | PSCW030821 |
| 04-25 | V0S1LRV010 |
| 04-26 | PBOT182002 |
| 04-27 | V0S1LRV020 |
| 04-28 | V0S1LRV030 |
| 04-29 | PBOT181602 |
| 04-30 | V0S1SPG002 |
| 04-31 | PSCW040829 |
| 04-32 | PSCW053504 |
| 04-33 | V0S1BRL010 |

06 MAGAZINE

| | |
|------|------------|
| 06-1 | V0S2MAG000 |
|------|------------|

07 HOP SYTEM

| | |
|-------|------------|
| 07-1 | V0S3HOP010 |
| 07-2 | V0S3HOP020 |
| 07-3 | V0S3HOP030 |
| 07-4 | V0S3HOP040 |
| 07-5 | V0S3HOP050 |
| 07-6 | V0S3HOP060 |
| 07-7 | V0S3HOP070 |
| 07-8 | V0G0HOP010 |
| 07-9 | V0G0HOP020 |
| 07-10 | V0S3SPG001 |
| 07-11 | PBOT027802 |
| 07-12 | PBOT021102 |
| 07-13 | PSCW261501 |
| 07-14 | V0S3HOP090 |
| 07-15 | V0S3SPG002 |
| 07-16 | V000TUB470 |

08 TRIGGER SYSTEM

| | |
|-------|------------|
| 08-1 | V0S0BLT0H0 |
| 08-2 | V0S0SPG050 |
| 08-3 | VGC0BLT0E0 |
| 08-4 | V0S0SPG060 |
| 08-5 | V0S0BLT0F0 |
| 08-6 | V0S0SPG070 |
| 08-7 | PBOT031202 |
| 08-8 | V0S0THG040 |
| 08-9 | V0S0THG050 |
| 08-10 | PSCW041003 |
| 08-11 | PSCW040803 |
| 08-12 | V0S0SPG080 |
| 08-13 | V0S0THG010 |
| 08-14 | V0S0THG020 |
| 08-15 | PSCW261031 |
| 08-16 | PSCW260631 |
| 08-17 | V0S0SPG090 |
| 08-18 | PSCW031227 |
| 08-19 | V0S0MSY010 |
| 08-20 | PBOT030903 |
| 08-21 | PSCW030803 |
| 08-22 | V0S0BLT0G0 |
| 08-23 | PSCW030821 |

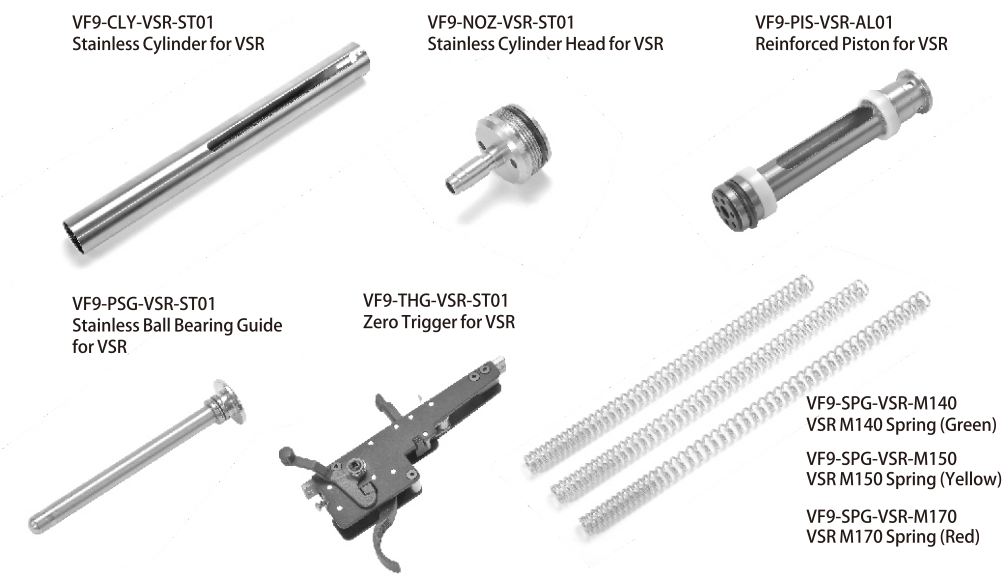
09 BOLT CARRIER

| | |
|-------|------------|
| 09-1 | V0S0BLT0K0 |
| 09-2 | V0S0BLT0L0 |
| 09-3 | V0S2BLT080 |
| 09-4 | PRIG000062 |
| 09-5 | V0S0BLT070 |
| 09-6 | V0S0BLT090 |
| 09-7 | PRIG000063 |
| 09-8 | V0S0SPG0T0 |
| 09-9 | V0S0SPG0S0 |
| 09-10 | V0S0BLT080 |
| 09-11 | V0S0BLT0A0 |
| 09-12 | V0S0BLT0M0 |
| 09-13 | V0S2BLT090 |
| 09-14 | V0S0BLT0D0 |
| 09-15 | V0S2BLT030 |
| 09-16 | V0S2BLT040 |
| 09-17 | V0S2BLT050 |
| 09-18 | V0S0BLT040 |
| 09-19 | V0S0SPG040 |
| 09-20 | PRIG000040 |
| 09-21 | PSCW041204 |

Replacement Parts

| | | | |
|-------------|--|------------|---|
| 7-1 ~ 7-15 | VF9-HOP-M40-ZN01 HOP UP unit | 4-9 ~ 4-10 | VF9-STK-M40-PL01 Adjustment Stock Plate |
| 7-16 | VF9-BRL-IN470-01 Inner barrel | 4-16 | VF9-STK-M40-PL02 Cheek rest sticker |
| 3-5 ~ 3-8 | VF9-BRL-M40-PL01 Barrel Spacers(front & Rear) | 4-17 | VF9-STK-M40-ST01 Cheek rest adjustable screw |
| 3-9 ~ 3-12 | VF9-HOP-M40-ZN02 HOP UP base | 4-18~4-24 | VF9-HOP-M40-PL03 HOP UP adjust set |
| 9-1 ~ 9-2 | VF9-HOP-M40-PL01 LoadingPlate V2 | 4-25~4-32 | VF9-TGD-M40-BK01 Trigger guard set |
| 1-1 ~ 1-5 | VF9-HOP-M40-PL02 Loading Slider V2 | 4-33 | VF9-LRV-M40-ST01 M40A3 Bipod adapter |
| 9-15 ~ 9-21 | VF9-BLT-M40-ZN01 Cocking handle | 6-1 | VF9-MAG-M40-BK01 M40A3 magazine |

Upgrades

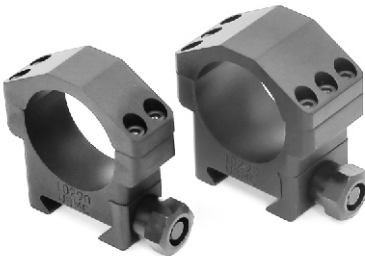


SNIPER RIFLE, 6mm, M40A3

VF9-MWS-M40-AL01
M40A3 Accessory Rail



VF9-MWS-M40-AL02
Tactical Scope Ring (30mm- 1 inch)



After Service

Warranty Policy

- **Limitations**
 - This limitation warranty is restricted in Vega Force Company(VFC) products.
- **Limited Warranty Terms**
 - Period: one month, since the purchasing of VFC products.
 - It is limited to VFC products' functional ability, exterior condition and motor is not covered.
 - The warranty will be extended for an extra month after repairing.
 - THIS WARRANTY DOES NOT COVER: malfunction, defect, failure, or damage caused by or resulting from...
 - Impact, mishandling, tampering, or use contrary to the applicable instruction manual;
 - Arising from ordinary wear and tear, wind, fires, storm, earthquake, inadequate or improper lighting, adverse weather conditions or other acts of God or nature,
 - Operators abuse or neglect, misuse, accident or mishap.
 - Not using VFC recommends power voltage battery.
 - Repairing or alterations performed by non VFC certificated personnel.