

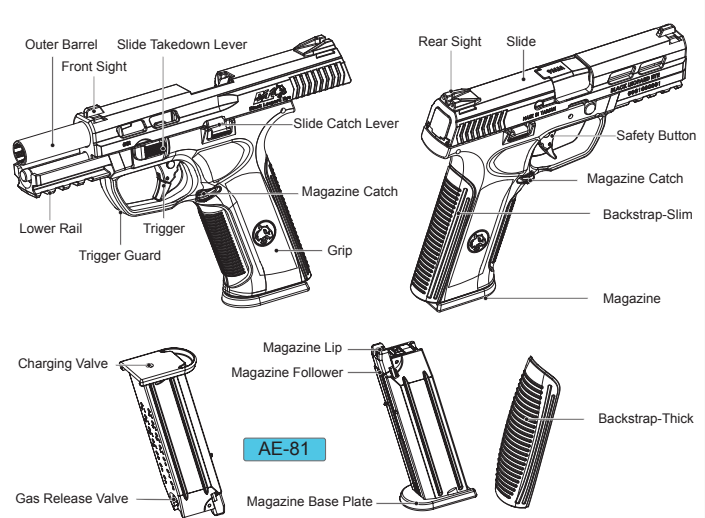


Please read the instruction manual carefully [ Attention · Instruction ], and fully understand each attention notice before using.

**WARNING**

- Operation of this air gun is for training purposes only at legal training facilities. Users will follow all applicable air gun laws and regulations. Sales and usage are restricted to 18-year-old people or older.
- Plastic BB's can reach a distance of 50 to 60 meters, and up to 300 fps. Careless shooting and mis-handling may result in severe eye damage and/or other injuries. Always wear eye and body protection. Never point or shoot at people or animals.
- Always follow safety handling and precautions as listed in the manual. Fully understand all functions within this air gun. Use this air gun with full awareness of its precautions. Use within full compliance of State and local laws.

**1 PART DESCRIPTION**



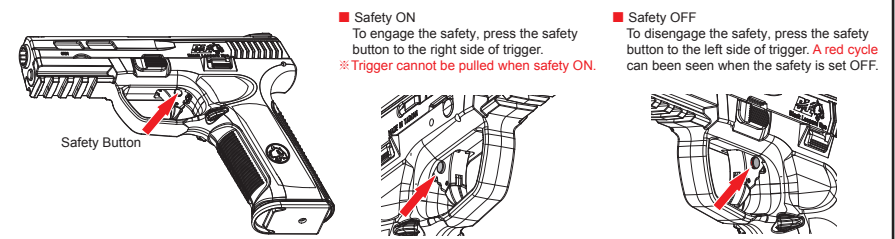
**WARNING · ATTENTION**

Never shoot with face or fingers close to the moving parts of the slide.

The slide is pushed by gas pressure, sliding it back and forth rapidly. To prevent injury, never pull the trigger with face or fingers close to the moving parts of the slide.

**The pistol could be damaged when temperature is above 40C (104°F)**

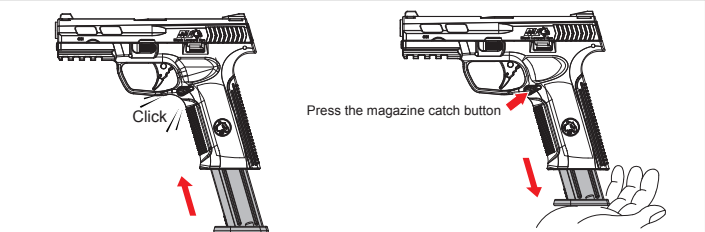
**2 SAFETY DEVICE**



**Safety ON**  
To engage the safety, press the safety button to the right side of trigger. **Trigger cannot be pulled when safety ON.**

**Safety OFF**  
To disengage the safety, press the safety button to the left side of trigger. **A red cycle can be seen when the safety is set OFF.**

**3 LOADING MAGAZINE**



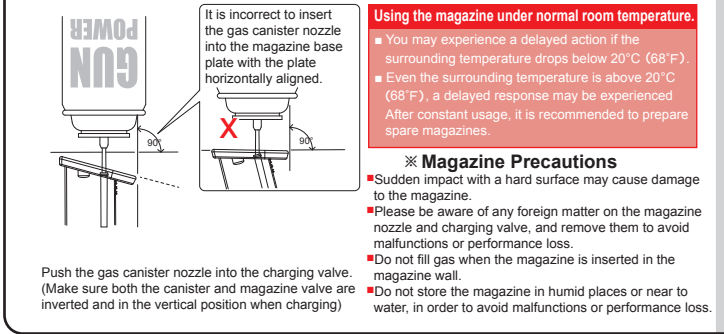
**WARNING · ATTENTION**

- Keep your finger off the trigger and out of the trigger guard until aligning the sights with your target and you are ready to fire.
- After you are finished shooting, remove the magazine and visually examine the open chamber to ensure no remaining BBs.

Push the magazine up until it clicks into a locked position. Pull on the magazine to assure that it is locked in place.

Release the magazine by pressing the magazine catch button. Hold the magazine when releasing it from the pistol grip to prevent it from dropping.

**4 CHARGING GAS**



It is incorrect to insert the gas canister nozzle into the magazine base plate with the plate horizontally aligned.

Push the gas canister nozzle into the charging valve. (Make sure both the canister and magazine valve are inverted and in the vertical position when charging)

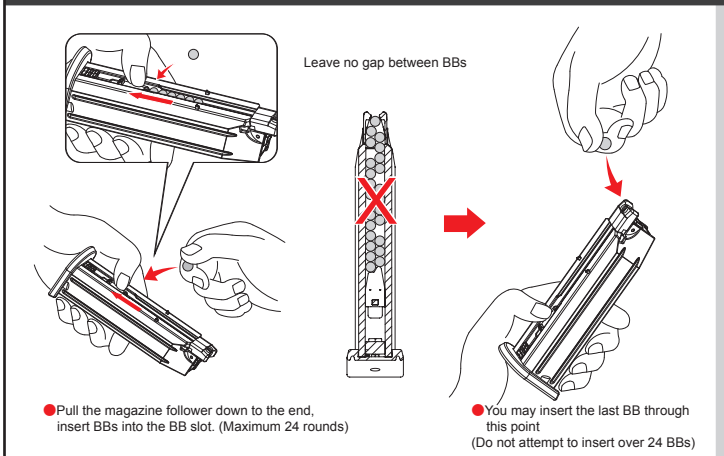
**Using the magazine under normal room temperature.**

- You may experience a delayed action if the surrounding temperature drops below 20°C (68°F).
- Even the surrounding temperature is above 20°C (68°F), a delayed response may be experienced. After constant usage, it is recommended to prepare spare magazines.

**Magazine Precautions**

- Sudden impact with a hard surface may cause damage to the magazine.
- Please be aware of any foreign matter on the magazine nozzle and charging valve, and remove them to avoid malfunctions or performance loss.
- Do not fill gas when the magazine is inserted in the magazine wall.
- Do not store the magazine in humid places or near to water, in order to avoid malfunctions or performance loss.

**5 LOADING BBs**



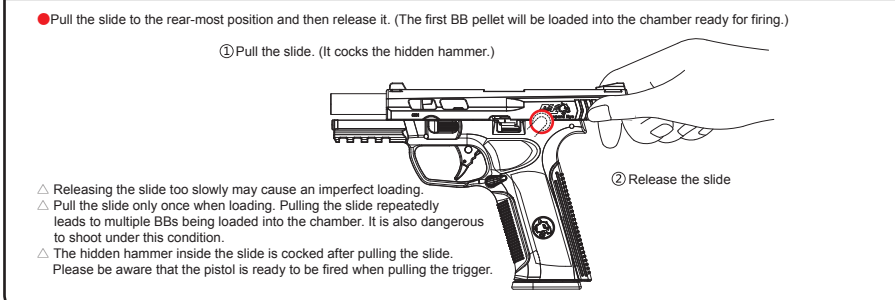
**WARNING · ATTENTION**

- Do not release the magazine follower abruptly. Releasing the magazine follower carelessly may damage the magazine lip.

Pull the magazine follower down to the end, insert BBs into the BB slot. (Maximum 24 rounds)

You may insert the last BB through this point (Do not attempt to insert over 24 BBs)

**6 LOADING**



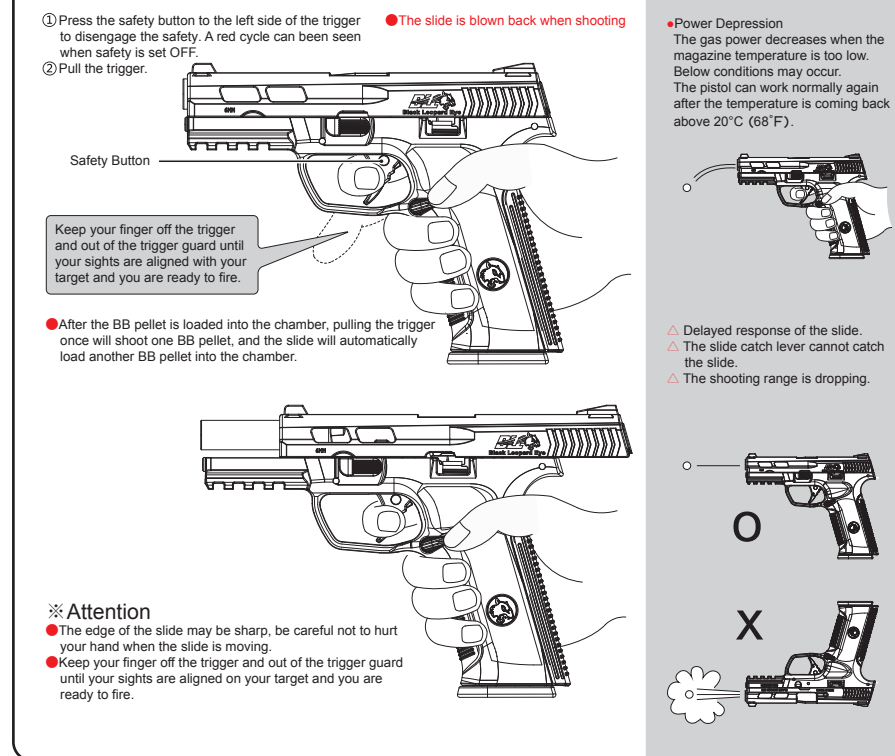
Pull the slide to the rear-most position and then release it. (The first BB pellet will be loaded into the chamber ready for firing.)

Pull the slide. (It cocks the hidden hammer.)

Release the slide

- Releasing the slide too slowly may cause an imperfect loading.
- Pull the slide only once when loading. Pulling the slide repeatedly leads to multiple BBs being loaded into the chamber. It is also dangerous to shoot under this condition.
- The hidden hammer inside the slide is cocked after pulling the slide. Please be aware that the pistol is ready to be fired when pulling the trigger.

**7 SHOOTING**



Press the safety button to the left side of the trigger to disengage the safety. A red cycle can be seen when safety is set OFF.

Pull the trigger.

After the BB pellet is loaded into the chamber, pulling the trigger once will shoot one BB pellet, and the slide will automatically load another BB pellet into the chamber.

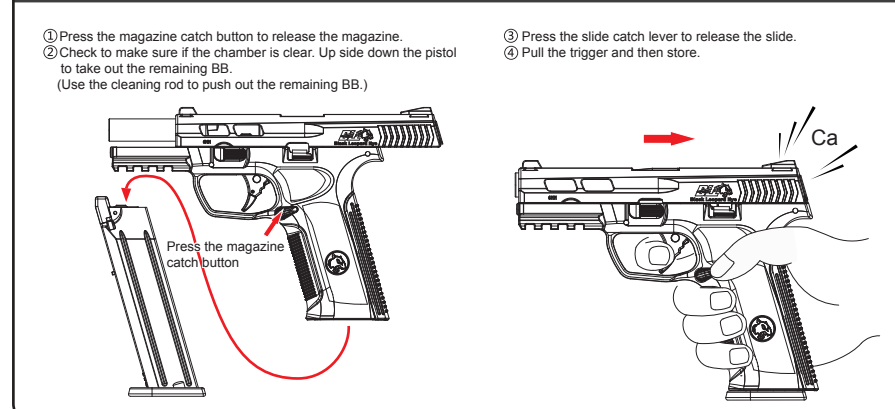
**Attention**

- The edge of the slide may be sharp, be careful not to hurt your hand when the slide is moving.
- Keep your finger off the trigger and out of the trigger guard until your sights are aligned on your target and you are ready to fire.

Power Depression  
The gas power decreases when the magazine temperature is too low. Below conditions may occur. The pistol can work normally again after the temperature is coming back above 20°C (68°F).

- Delayed response of the slide
- The slide catch lever cannot catch the slide.
- The shooting range is dropping.

**8 STORAGE**



Press the magazine catch button to release the magazine.

Check to make sure if the chamber is clear. Up side down the pistol to take out the remaining BB. (Use the cleaning rod to push out the remaining BB.)

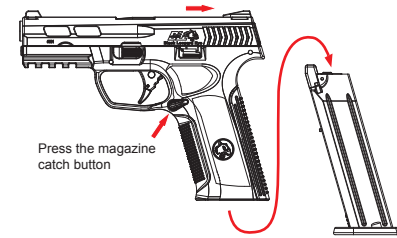
Press the slide catch lever to release the slide.

Pull the trigger and then store.

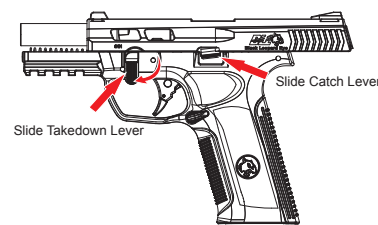
## 9 DISASSEMBLY (Do it when necessary)

It is necessary to do the main disassembly in order to adjust the H-UP and maintenance.

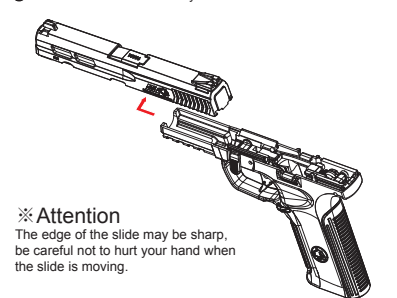
- Remove the magazine by pressing the magazine catch button.
- Pull back the slide to the end.



- Engage the slide catch lever into the slot on the slide.
- Turn the slide takedown lever clockwise and then press the slide catch lever.



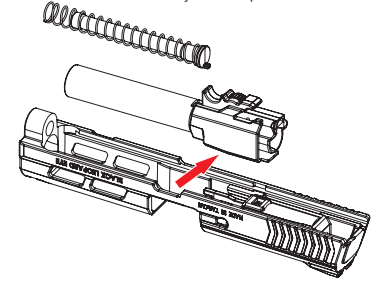
- Glide the slide forward away from the frame.



### ※ Attention

The edge of the slide may be sharp, be careful not to hurt your hand when the slide is moving.

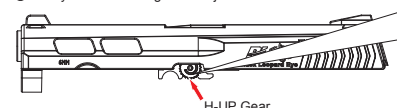
- Glide the outer barrel assembly forward. Pull up the rear part of the outer barrel assembly and then pull out.



## 10 H-UP ADJUSTMENT

■ Adjust and test. (Perform shooting tests according to step 7.)

- Follow step 9 to disassemble the outer barrel assembly.
- Stowly dial the H-UP gear to adjust the H-UP.



※ Dial the H-UP gear counter-clockwise to make the pellet go up.

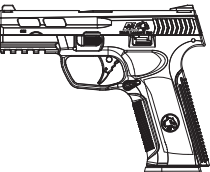
※ The BB pellet drops within a short range means the H-UP is not enough. Increase the H-UP to adjust the trajectory.

- ✗ Dial the H-UP gear clockwise to make the pellet go down.

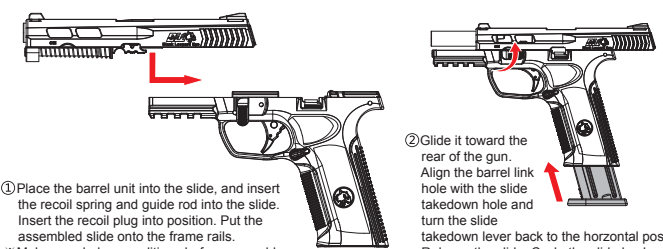
Best Trajectory ○

- ✗ Dial the H-UP gear counter-clockwise to make the pellet go up.

Test several shots to adjust the H-UP until the BB pellet is flying straightforwardly.  
※ Do not need to adjust the H-UP gear after the BB trajectory is straightforward.



## 11 ASSEMBLY



- Place the barrel unit into the slide, and insert the recoil spring and guide rod into the slide. Insert the recoil plug into position. Put the assembled slide onto the frame rails.
- Glide it toward the rear of the gun. Align the barrel link hole with the slide takedown hole and turn the slide takedown lever back to the horizontal position. Release the slide. Cycle the slide back and forth to ensure proper assembly.
- Insert the magazine back.

### WARNING · ATTENTION

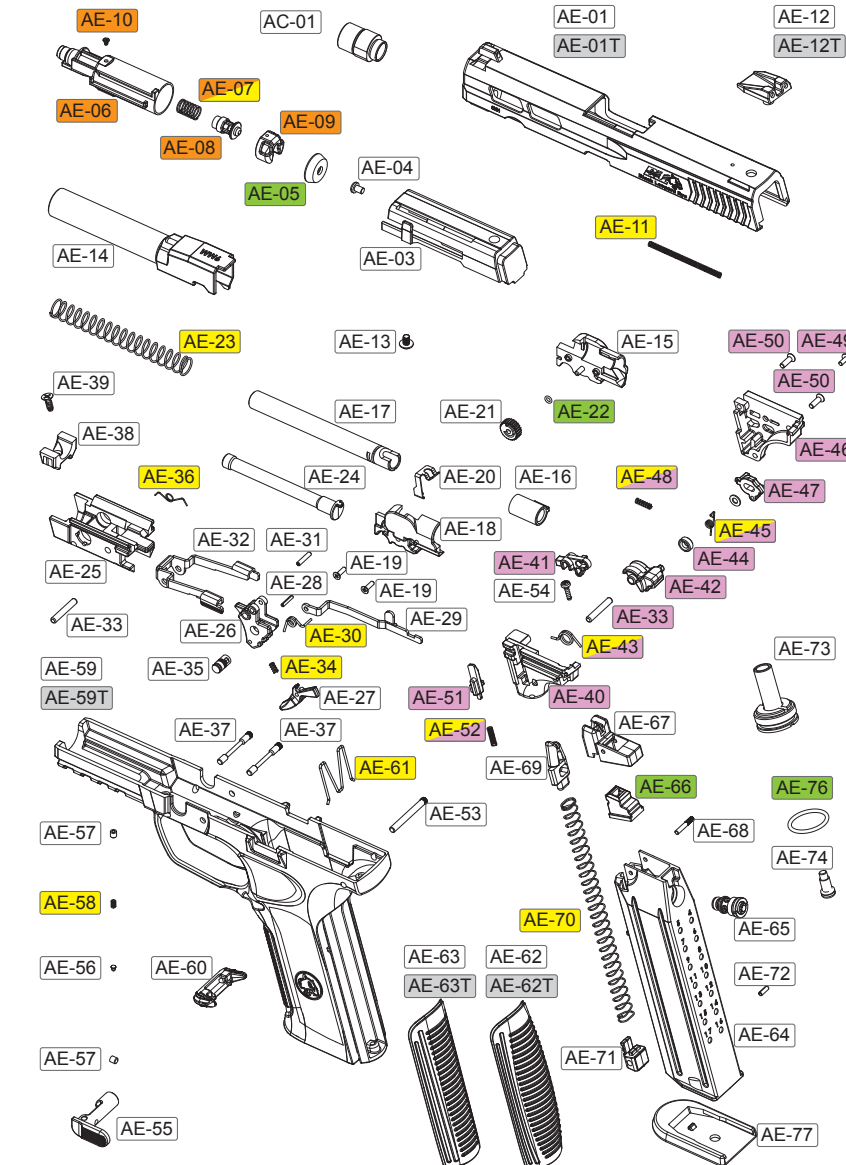
■ ICS is exempted from malfunction, accident, injury or any problem occurred by incorrect assembling or component lost from end users, and the repair expense due to the reasons mentioned above should be absorbed by end users.

## 12 BASIC TROUBLESHOOTING GUIDE

SYMPTOMS	POSSIBLE CAUSE	SOLUTIONS
No response	The safety is under "ON" position. (No firing)	Switch the safety to "OFF". (refer to step 2)
	Too much pressure inside the magazine.	Press the gas valve gently to release few pressure. Be careful of the gas spray direction.
	Not enough gas inside the magazine.	Charge gas into magazine (refer to step 4)
The slide blows back but no BB is shot out.	BB cannot be loaded into the chamber.	Load the first BB into the chamber (refer to step 5)
	BB jams inside the magazine.	Insert a 3mm plastic rod into the inner barrel two to three times to push out the BB.
	Magazine is too cold.	Use hand to warm up the magazine. (refer to step 4)
Will not complete cycle	Temperature is too low. (during the winter)	Use hand to warm up the magazine. (refer to step 4)
	Magazine is too cold.	
	No gas inside the magazine.	
Slide jams	Lubricant or silicon oil is not enough.	Apply lubricant to the moving parts.
	BBs or foreign matters jam inside slide or frame.	Take out the BBs or foreign matters.
Gas comes out from the barrel	Slide takedown lever is not released.	Turn the slide takedown lever to release the slide.
	Temperature is too low. (during the winter)	Use hand to warm up the magazine. (refer to step 4)
	Magazine is too cold.	
BBs fly up	H-UP is over adjusted.	Adjust the H-UP gear clockwise direction. (refer to step 10)
Shooting range is too short (w/o adjusting H-UP)	H-UP is not enough.	Adjust the H-UP gear counter-clockwise direction. (refer to step 10)
	Foreign matters or oil in the inner barrel.	Clean the inner barrel and H-UP bucking.
BB's roll out of barrel	H-UP is not enough.	Adjust the H-UP gear counter-clockwise direction. (refer to step 10)
BB jams	H-UP is over adjusted.	Adjust the H-UP gear clockwise direction. (refer to step 10)
	Bad BBs, oversize BBs	ICS 6mm caliber BBs are recommended for optimum performance.
	Foreign matters or oil in the inner barrel.	Clean the inner barrel.

## 13 PARTS DIAGRAM

\*The components/accessories for each model may have kind of differences depending on the actual goods. Images are only for reference.



## 14 PART DESCRIPTION

ITEM#	DESCRIPTION	Q'TY	ITEM#	DESCRIPTION	Q'TY
AE-01	XAE Slide and Dummy Extractor	1	AE-43	XAE Hammer Spring	1
AE-01T	XAE Slide and Dummy Extractor-TAN	1	AE-44	XAE Hammer Guide Wheel	1
AE-03	XAE Cylinder Housing	1	AE-45	XAE Knocker Spring	1
AE-04	M1 Screw	1	AE-46	XAE Hammer Housing-Right	1
AE-05	XAE Piston Ring	1	AE-47	XAE Hammer Disconnecter	1
AE-06	XAE Cylinder	1	AE-48	XAE Hammer Disconnecter Spring	1
AE-07	XAE Valve Spring	1	AE-49	Round Head Hammer Housing Screw	1
AE-08	XAE Valve	1	AE-50	Flat Head Hammer Housing Screw	2
AE-09	XAE Cylinder Cover	1	AE-51	XAE Hammer Disconnect Pin	1
AE-10	XAE Cylinder Housing Screw	1	AE-52	XAE Hammer Disconnect Pin Spring	1
AE-11	Cylinder Housing Spring	2	AE-53	XAE Hammer Housing Pin	1
AE-12	XAE Rear Sight	1	AE-54	Hammer Housing Screw	1
AE-12T	XAE Rear Sight-TAN	1	AE-55	XAE Slide Takedown Lever	1
AE-13	Rear Sight Screw	1	AE-56	XAE Slide Takedown Lever Button	1
AE-14	XAE Outer Barrel	1	AE-57	Slide Takedown Lever Screw	2
AE-15	XAE H-UP Chamber-Right	1	AE-58	XAE Slide Takedown Lever Spring	1
AE-16	XAE H-UP Bucking	1	AE-59	XAE Frame	1
AE-17	XAE Inner Barrel	1	AE-59T	XAE Frame-TAN	1
AE-18	XAE H-UP Chamber-Left	2	AE-60	XAE Magazine Catch	1
AE-19	XAE H-UP Chamber Screw	1	AE-61	XAE Magazine Catch Spring	1
AE-20	XAE H-UP Plate	1	AE-62	XAE Backstrap-Thick	1
AE-21	H-UP Dial	1	AE-62T	XAE Backstrap-Thick-TAN	1
AE-22	O-ring	1	AE-63	XAE Backstrap-Thin	1
AE-23	XAE Recoil Spring	1	AE-63T	XAE Backstrap-Thin-TAN	1
AE-24	XAE Recoil Spring Guide	1	AE-64	XAE Magazine Case	1
AE-25	XAE Trigger Housing	1	AE-65	XAE Magazine Valve Assembly	1
AE-26	XAE Trigger	1	AE-66	XAE Magazine Nozzle Seal	1
AE-27	XAE Trigger safety	1	AE-67	XAE Magazine Lip	1
AE-28	Trigger Safety Pin	1	AE-68	XAE Magazine Lip Pin	1
AE-29	XAE Trigger Bar	1	AE-69	XAE Magazine Follower	1
AE-30	XAE Trigger Bar Spring	1	AE-70	XAE Magazine Follower Spring	1
AE-31	Trigger Bar Spring Pin	1	AE-71	XAE Magazine Base Plate Stop	1
AE-32	XAE Slide Catch Lever Plate	1	AE-72	Magazine Base Plate Stop Pin	1
AE-33	Slide Catch Lever Plate Pin	2	AE-73	XAE Magazine Gas Tube and Base	1
AE-34	XAE Trigger Spring	1	AE-74	Magazine Charging Valve	1
AE-35	XAE Trigger Safety Button	1	AE-76	O-ring	1
AE-36	XAE Slide Locking Plate Pin	1	AE-77	XAE Magazine Base	1
AE-37	V Trigger Housing Pin-Short	1	AE-78	XAE O-ring Pack	5
AE-38	XAE Slide Positioning Block	1	AE-79	XAE Spring Pack	13
AE-39	Slide Positioning Block Screw	1	AE-80	XAE Cylinder Assembly	5
AE-40	XAE Hammer Housing-Left	1	AE-81	XAE Magazine	1
AE-41	XAE Knocker	1	AE-82	XAE Hammer Assembly	15
AE-42	XAE Hammer	1	AC-01	BLE Outer Barrel Adapter	1